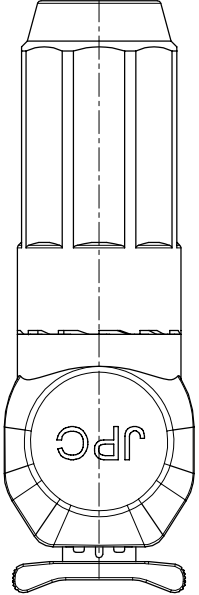
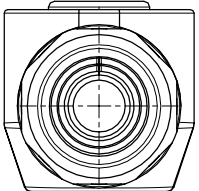
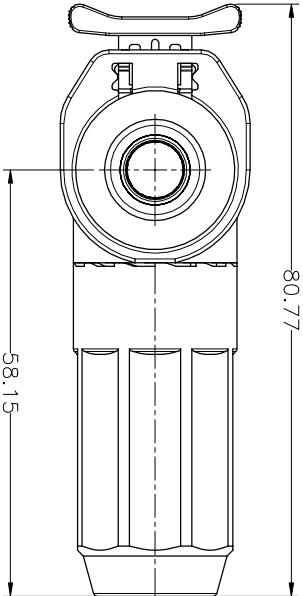
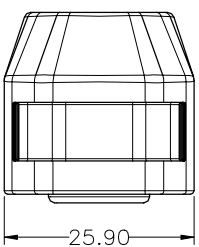
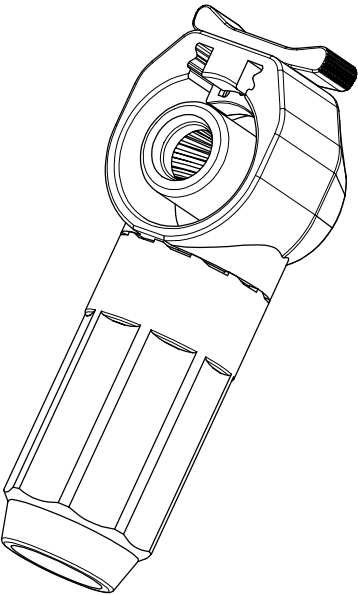
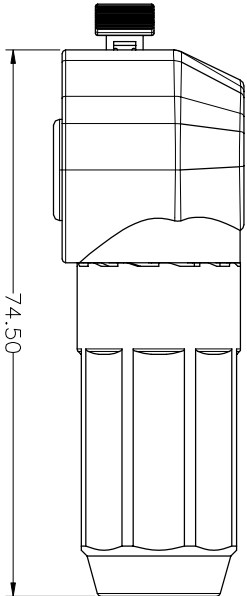


THIS DRAWING AND THE DATA DISCLOSED HEREIN OR HERewith IS NOT TO BE REPRODUCED USED OR DISCLOSED IN WHOLE OR IN PART TO ANYONE WITHOUT THE PERMISSION OF JESS-LINK PRODUCTS CO.,LTD.(JPC)

CUSTOMER DRAWING
DRWC-000952

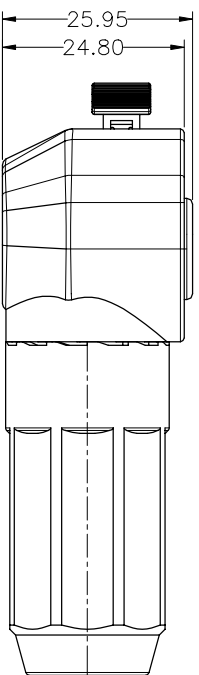
REV.	ECN NO.	DESCRIPTION	MD'D.	AP'D.	DATE
01		INITIAL DESIGN	Colin	Andrew	11/17/2020
02		ADD NEW PART NUMBER	Ronnie	Richard	03/18/2022



NOTE:

- 1.工作溫度Operating temperature: -40~125°C;
- 2.額定電流Current rating:Power:150-200A;
- 3.額定電壓Operating voltage:Power1500VDC;
- 4.耐電壓Dielectric withstanding voltage:3000 VDC;
- 5.機械壽命Mating cycle:500.
- 6.帶二次鎖扣 Secondary lock.
- 7.Cable Size: 35mm²/50mm²
- △8.Port Number: PCNBC00XRC78-0

PART NO.	CABLE Size(mm ²)	Current (A)	Body Color
PCNBC002RC78-0	50(mm ²)	200	Pink
PCNBC003RC78-0	35(mm ²)	150	Pink
PCNBC005RC78-0	50(mm ²)	200	Black
PCNBC006RC78-0	35(mm ²)	150	Black



RoHS COMPLIANT

HALOGEN FREE

Unit : mm	PROJECTION	JPC connectivity	
GENERAL TOLERANCES: (UNLESS SPECIFIED)	D.R. 11/17/2020	TITLE PSL-200A 插頭 (Customer drawing)	
0 = ±.50	CHLK 11/17/2020	SCALE 1:1	PD./FILE NO. C19C0010A
0.00 = ±.15	Ahoc	PART NO. PCNBC00XRC78-0	REV. 02
0" = ±.05	APVD 11/17/2020		SHEET 1 OF 1
0" = ±.2"	Andrew		